



SCHOOL REPORT CARD 2008
Arizona Department of Education

Tom Horne Superintendent of Public Instruction
 Research and Evaluation Section
 (602) 542-5151 / reportcards@azed.gov

Edu-Prize

Edu-Prize, Inc.

580 W. Melody Ave.
 Gilbert, AZ 85233
 (480) 813-9537 office
 (480) 813-6742 fax
 www.edu-prize.com

Principal Lynn Robershotte
 lynn.robshotte@edu-prize.com

Entity ID 5479
 CTDS 078634101
 Grades Served KG - 8
 Students Enrolled 1160
 Type of School Charter Facility

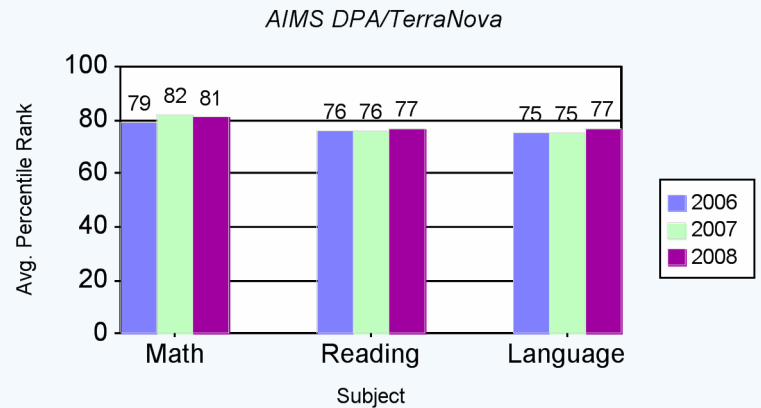
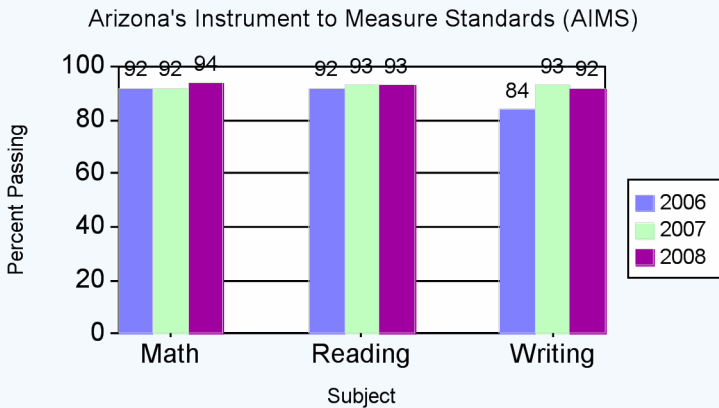
Office Hours 7:00 AM to 4:30 PM
 Number of Instruction days Not Avail
 School Year Start and End Not Avail

School Mission and Goals

Edu-Prize fosters students' innate giftedness through an array of educational opportunities. Emphasis is placed on nurturing a love for learning and self-direction through the use of a hands-on, developmentally appropriate, science-driven curriculum.

AZ LEARNS Profile For The School	Excelling
The Federal School Improvement Status	N/A
The AYP Status For This School	Met

Test Results for Spring 2007



Measure of Academic Progress (MAP)

Subject	Number in Analysis	Avg Growth Index For School	Avg Growth Index for State
MATH	446	9	-3
READ	436	11	-1

Arizona English Language Learners Assessment (AZELLA)

Number of English Language Learners	Not Avail
Percent Reclassified as Proficient	Not Avail

School Performance Measures

Attendance Rate	96%
Promotion Rate	99%
Dropout Rate	0%
Four-Year Graduation Rate*	NA
Five-Year Graduation Rate*	NA

On Campus Incidents 1

Staff has been trained to respond to emergencies. Quarterly lock-down and evacuation drills are held. The campus is secure in a fenced in enclosure with locked gates. Admittance is through check in at the front desk only. Visitors are required to wear a visitors badge or volunteer badge at all times when on campus. Edu-Prize enforces a 'no tolerance policy' for threats and violence.

* - Graduation Rate does not apply to K-8 Schools
 NA - Not Applicable

The Arizona Department of Education of the State of Arizona does not discriminate on the basis of race, religion, color, national origin, sex, disability or age in its programs, activities or in its hiring and employment practices. For questions or concerns regarding this statement, please contact Administrative Services at 602-542-3186.